



# User's manual



## Wireless Stereo Headphones

Model: TWZ - 1000

### Thank you for purchasing.

## Safety precaution

Safety precaution contains notes for safe use of this product in the United States. Incorrect usage may cause fire or injury. Be sure to read it before use and handle it properly. Keep it in a place where you can be helped when necessary.

### Meaning of Indications and signs

Table with 4 columns: Danger (High risk of death or serious injury), Warning (Possibility of death or serious injury), Caution (Possibility of injury or property damage), and symbols for Prohibited of decomposition, Prohibited, Attention, and Indication.

## Danger

- Do not dispose of the product in a fire or attempt to heat it. Do not charge the battery of the product, use or abandon the product in a high or low temperature environment.
Do not use, store or abandon the product in a high temperature or high humidity environment such as next to a fire or heating apparatus, in a place under the direct sunlight, inside of a car under the blazing sun or in a bathroom.

- Do not short-circuit the terminals of the product. Also do not carry or store the product close to metal items such as metal accessories or coins.

- Be sure to charge the battery of the product with specified way using the charging case and the bundled USB cable.

- Do not attempt to pierce, hit, compress, drop, or subject the battery to any other severe impact or force.

## Warning

- Do not damage the USB cable (such as scraping, cutting, modifying, removing parts, heating, placing close to any source of heat, forcibly bending and twisting, pulling, compressing and bundling).
- Make sure to insert the USB connector fully and properly.
- Do not use the headphones on an airplane.
- Do not use the product while driving a car, riding a motorcycle, bicycle or any other vehicle.
- Do not use the product on a place where the circumstances require to take care, such as railroad crossings, pedestrian crossings, station platforms, roadways, construction sites, to prevent physical accidents.

- Do not insert other foreign objects (such as flammables, metals, water and liquid) into the products to prevent fire, electric shock, or equipment damage.
- Do not use the product covered with thick blankets, comforters or similar items.
- This product must not be discarded as household waste. Please dispose of the product properly, following local regulations.
- Keep out of reach of children.
- Always keep away the charging case from you if use a cardiac pacemaker or implantable cardioverter-defibrillators.
- Do not use the headphones at medical institutions, near electro-medical apparatus or in crowded places.

## Warning

- The headphones may affect the operation of electronic medical devices.
- Do not make unauthorized alterations to the product to prevent fire, electric shock or equipment damage.
- Remove the headphone(s) and/or stop charging the battery immediately if you experience a warming sensation, a small, abnormal smell, abnormal irritation of the skin, heat or any damage.

## Caution

- Listening with the headphones at high volume may affect your hearing.
- Do not put weight or pressure on this product as it may cause deform of the body or connector during long storage.
- Do not use damaged USB cable or stop inserting loose connector of the cable.
- Fix the earpips firmly on the headsets.
- Do not let the charging case go near objects that can be affected by magnetic fields, such as magnetic cards, floppy disks, monitors, computers or watches (quartz or mechanical).

- This products is produced for Japan and the U.S. market only.
- Store the headphones in the charging case after use.

## Safety precaution for rechargeable batteries

- Do not make unauthorized alterations to or scratch the batteries.
- Do not dispose of the product in a fire or attempt to heat it. Do not charge the battery of the product, use or abandon the product in a high or low temperature environment.
- [ Leakage of battery fluid is noticed ]
- [ Disposal of this product ]

- This symbol means the product must not be discarded as household waste, and should be delivered to an appropriate collection facility for recycling.
- Do not touch the solution with bare hands.
- [ Disposal of this product ]

## Regulatory Information

NOTE: This equipment has been tested and found to comply with the limits for a Class B digital device, pursuant to part 15 of the FCC Rules. These limits are designed to provide reasonable protection against harmful interference in a residential installation.

Company Name: Around the world trading, inc.
Address: 7519 cornway ct, San Diego, CA 92111
Telephone: 858-715-0461
Website: http://www.asthmart.com

## Operating caution

- The headphones operates within a range of about 12m (39feet).
Due to the characteristic of the wireless technology, the sound played on the headphones is delayed from the sound and music played on the sending Bluetooth device.
- Rechargeable battery and USB cable
Be sure to use this product only with an agency approved power supply which meets the U.S regulatory requirements (UL).

- Headphones
In a dry environment or winter season static electricity accumulated in the body may cause mild tingling in your ears.
- Water resistant performance
The water resistance of this product is equivalent to IPX5 in IEC 60529 for the headphones and IPX3 for the charging case.

## How to care

Please see ZERO AUDIO website or ZERO AUDIO app.

## Troubleshooting

Please see ZERO AUDIO website or ZERO AUDIO app.

## Specifications

Table with 2 columns: Driver (Dynamic omni-directional MEMS MIC version 5.0), Bluetooth Class (Version Class 1), Bluetooth Version (2.4GHz (2.402GHz - 2.480GHz)), Modulation method (FHSS), Bluetooth profile (A2DP / AVRCP / HFP / HSP), Codec (SBC, AAC, Qualcomm aptX™ audio), Accessories (Silicone cover), Battery (Headphones approx. 7.0g, Charging case approx. 48g), Net Weight (Headphones approx. 7.0g, Charging case approx. 48g), Applicable temperature for working (5°C - 40°C (41°F - 104°F)), Play time (up to approx. 7 hours), Applicable temperature for charging (10°C - 35°C (50°F - 95°F)), Water resistance (Headphones / IPX5, Charging case / IPX3).

### Codec

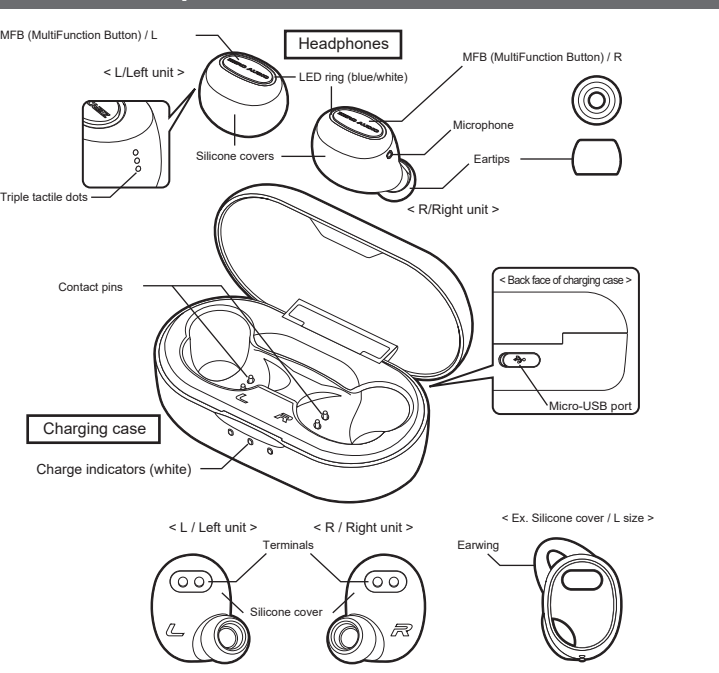
SBC / AAC / Qualcomm aptX™ audio
Bluetooth profile : A2DP / AVRCP

## Others

The Bluetooth® word mark and logos are registered trademarks owned by the Bluetooth SIG, Inc. and any use of such marks by KYOWA HARMONET LTD. is under license.
Qualcomm aptX and Qualcomm TrueWireless are products of Qualcomm Technologies, Inc. and/or its subsidiaries. Qualcomm is a trademark of Qualcomm Incorporated, registered in the United States and other countries.

- Charging case
If the computer enters into sleep mode or hibernation mode while connected to the charging case, charging will not be completed.
- Micro-USB port
Insert all the way so that there is no gap.
- Connect the other end to a booted computer.
- Confirm the left and right of headphones and put them in the charging case.

## Location of parts and controls



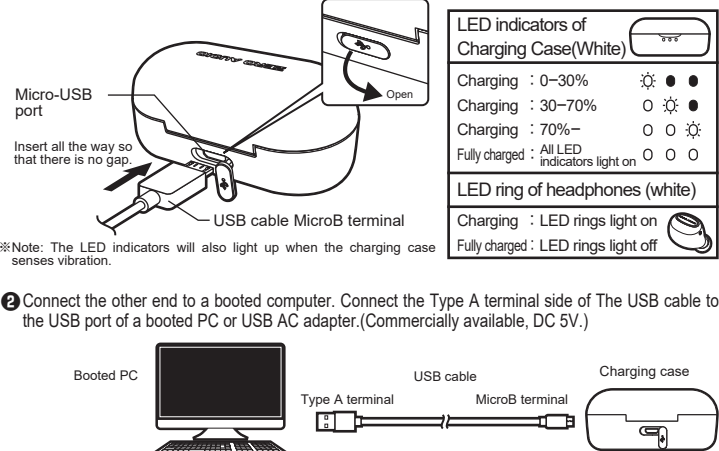
## How to use

Be sure to read the above description in advance for proper and safe use.

### 1. Charging the battery

- [ Be sure to read ]
Charge the product when using it for the first time. (The product is slightly charged only for inspection.)
- Be sure to use the included USB cable. And charge the charging case while connecting to a running PC or USB AC adapter.
- When pairing is completed, the LED ring of the right unit lights blue for about 1 second, and thereafter both LED rings light shortly once at about 5 second intervals.

- Open the Micro-USB port cover and firmly connect the MicroB terminal side of the USB cable to the port.



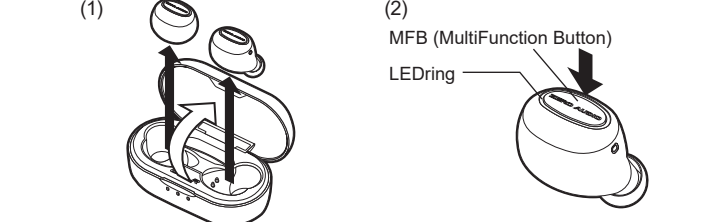
- Confirm the left and right of headphones and put them in the charging case. Then battery charging starts. The LED rings light up if headphones are properly stored.

- After charging is complete with all LED indicators on, remove the USB cable from the charging case.
Close the micro-USB port cover securely.

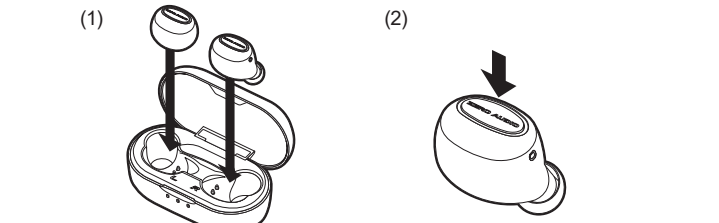
- [ Low battery warning ]
The headphones will turn off automatically several tens of minutes after "BATTERY LOW" is heard from the headphone whose remaining battery level gets low.

### 2. Turning on / off the headphones

- There are two ways of each.
Turn on the headphones
(1) Take the headphones from the charging case.
(2) Press and hold the MFB until the LED ring lights up in blue.



- Turn off the headphones
(1) Set the headphones securely in the charging case.
(2) Press and hold the MFB until the LED ring lights up in blue and it lights out.



### 3. Making connections to Bluetooth® devices

- Pairing / Device registration for the first time
Move the Bluetooth device within 1m(3 feet) of the headphones.
Turn on the Bluetooth device.
When the headphones turn on, they automatically enter pairing mode with the LED ring of the right unit flashing blue.

- Once Bluetooth devices are paired, there is no need to pair them again, except in the following cases:
-The headphones is already paired with 4 devices and another device is to be paired.

### 4. Wearing the headphones

- Minimize the volume of the Bluetooth device.
Wear the headphones on your ears. Earpips(M) and silicon cover(XS) are attached to each unit when purchasing.

### 5. Receiving or Making a call

- You can use the headphones to talk on the phone if a Bluetooth device has a phone function.
- When a Bluetooth device receives an incoming call, a ringtone will be heard from the headphones, and the LED rings blink blue during incoming call.

- Functions for a phone call
Making a call : Operate the Bluetooth device which has a phone function to make a call.
Answer a call : Press the MFB / R
End a call : Press the MFB / R
Reject a call : Press and hold the MFB / R for about 2 second

- Playback pauses when the Bluetooth device receives an incoming call while you are listening to music.
Playback automatically resumes after you finish the call.
The call volume and the audio volume are not linked when available. They can be adjusted separately.

### Pairing a PC

For Bluetooth connection with a PC another set-up is necessary. Refer to the instructions of the PC for details.

## 6. Listening to music

- Controlling the audio device
Play / Pause music : Press the MFB / R
Turn up volume : Press the MFB / R twice
Turn down volume : Press the MFB / L twice
Skip to the next track : Press and hold the MFB / R for about 2 second
Skip to the previous (or the beginning of the current) track : Press and hold the MFB / L for about 2 second

- During pause mode volume adjustment or skipping to the beginning of the track cannot be workable.
The available functions may vary depending on the Bluetooth device.

## 7. Starting the voice assist function

- Turn the voice assistant function on in the setting of the Bluetooth device which supports the function.
Press the MFB / R three times while the Bluetooth device is connected to the headphones via Bluetooth connection.
For details on the voice assist function, refer to the operating instructions of the Bluetooth device.

## Others

- Automatic function
Automatic power off
The headphones turn off automatically if they are not connected to the Bluetooth device for 3 minutes.
- Automatic searching mode
If you move out of the communication range and the connection is lost, the headphones enters the automatic searching mode automatically.

### Switching how to light the LED rings during playback

As the default setting the LED rings turn off while music is playing. Or as an option switch this setting to blinking mode by pressing the MFB / L three times during playback.

### Initializing the headphones to restore factory settings

- Put them in the charging case. Press and hold the MFB / R & L for about 4 seconds.
Ensure that the LED rings blink quickly, and then put the headphones very close.
Ensure that the LED rings stop blinking.

### How to pair right unit and left unit each other manually

If pairing between the right and left units is not completed successfully (e.g. you can hear sound only from one side) it may be recovered by the following procedure.

- Turn on the headphones and double click the MFB / R & L simultaneously while not connected to a Bluetooth device.
Ensure that the LED rings blink quickly, and then put the headphones very close.
Ensure that the LED rings stop blinking.

### Firmware update

The headphones can be updated with the latest firmware. For details, please visit our website.

## Limited Warranty

Note: Be sure to read before using the product.

Quality assurance provision
KYOWA HARMONET LTD. (hereinafter "ZERO AUDIO") which owns ZERO AUDIO brand warrants your product against defects in materials and workmanship when purchased directly from ZERO AUDIO or a ZERO AUDIO authorized reseller.

- This warranty card has no stamp of ZERO AUDIO authorized reseller or no proof of purchase details from ZERO AUDIO or a ZERO AUDIO authorized reseller.
This warranty card is altered or falsified, or not filled with requirements.
your product gets an unauthorized repair, modification or customization.

- < Other regulations >
a) The warranty covers only the headphones and the charging case.
b) Be sure to send the product to the manufacturer.
c) ZERO AUDIO shall have no responsibility for any defects, damage or troubles of any other products and any other loss arising from a defect or damage of the product.

https://en.zeroaudio.jp/contact

